



# -BUSINESS CONTENTS & EXPERIENCE-

# TOKYO KYUEI CO., LTD.



**COMPANY HQ;**  
2-4-2 IWAMOTOCHO,  
CHIYODA-KU,  
TOKYO,  
JAPAN



**TECHNICAL CENTER;**  
6906-10 SHIBA,  
KAWAGUCHI CITY,  
SAITAMA,  
JAPAN



**JAKARTA OFFICE;**  
JI.R.A KARTINI NO.37,  
TB. SIMATUPANG, LEBAK BULUS,  
CILANDAK,  
JAKARTA SELATAN 12440  
INDONESIA



# 1. Business Contents



**[Engineering] [Procurement] [Construction]  
[Diving Work] [Diving Survey] [Facility Maintenance]**

for Following Facilities and Structures:

- **Seawater Intake / Discharge Facility and Pipeline**

(For Thermal / Nuclear power plants, Energy facilities, Various plant such as Desalination, Chemical, Vaporization of liquid, etc., Fishery facilities)

- **Various Plant / Piping**

- **Marine / Coastal Facility / Structure**

- **Water Treatment and Waste Treatment Facility**

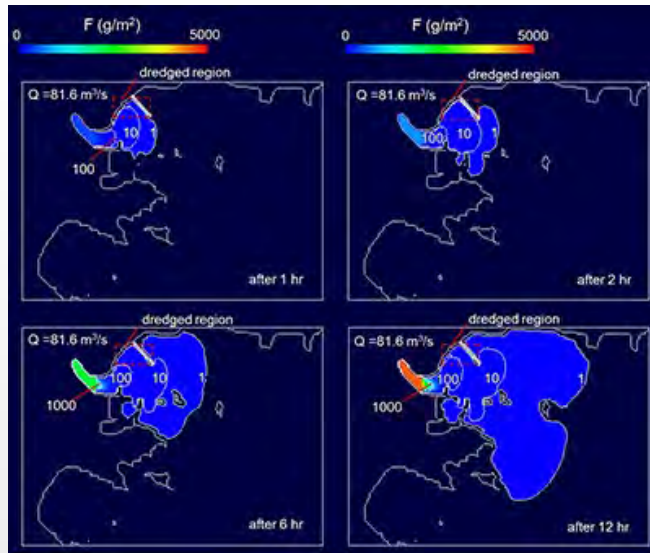
- **Water Quality Improvement Device**

- **Fishery-related Facility**

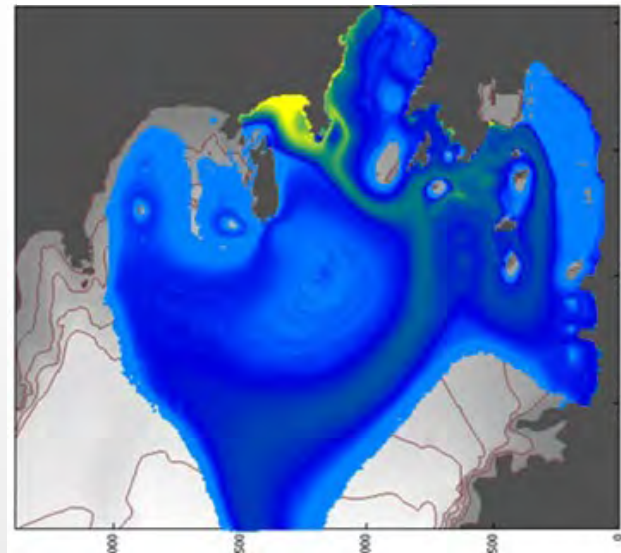
- **Aquarium, Marine Leisure Facility**

# -Engineering dept.- [Numerical analysis] [Predict] [Experiment]

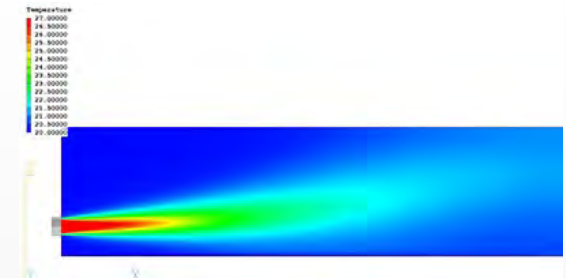
Coast Turbidity Predict



Turbidity Predict in the Bay



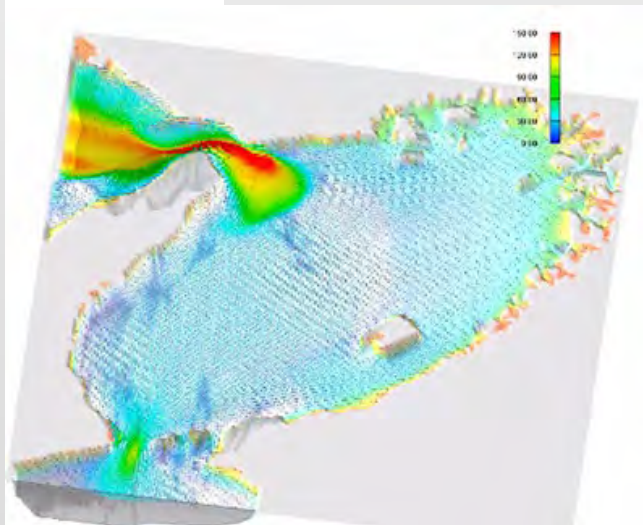
Hot Water Diffusion Analysis by CFD



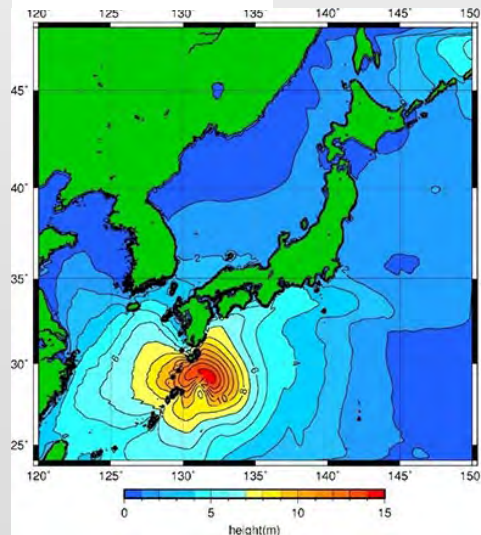
Hot Water Diffusion Analysis by Model test



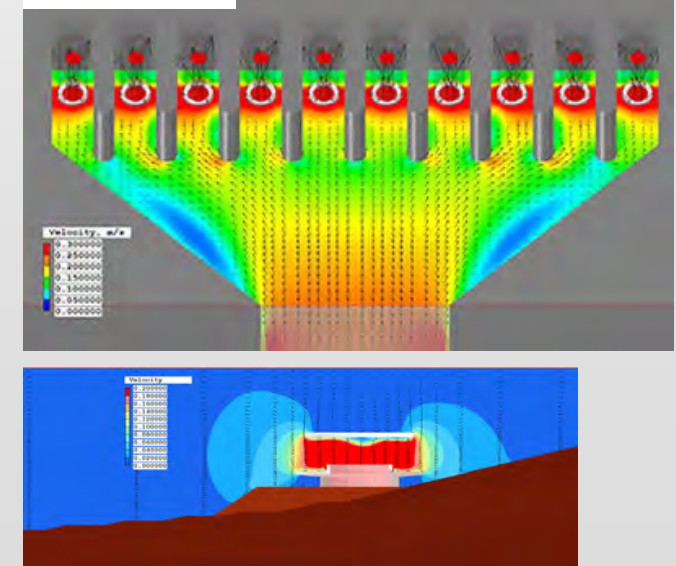
Flow Predict



Wave Forecast

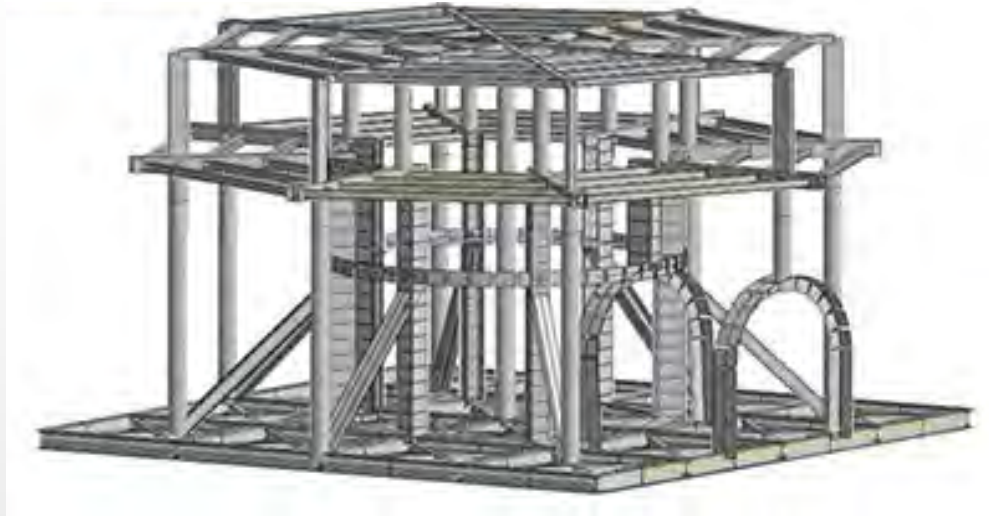


Fluid Analysis

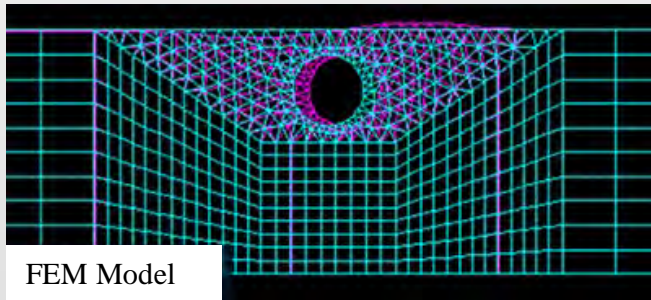
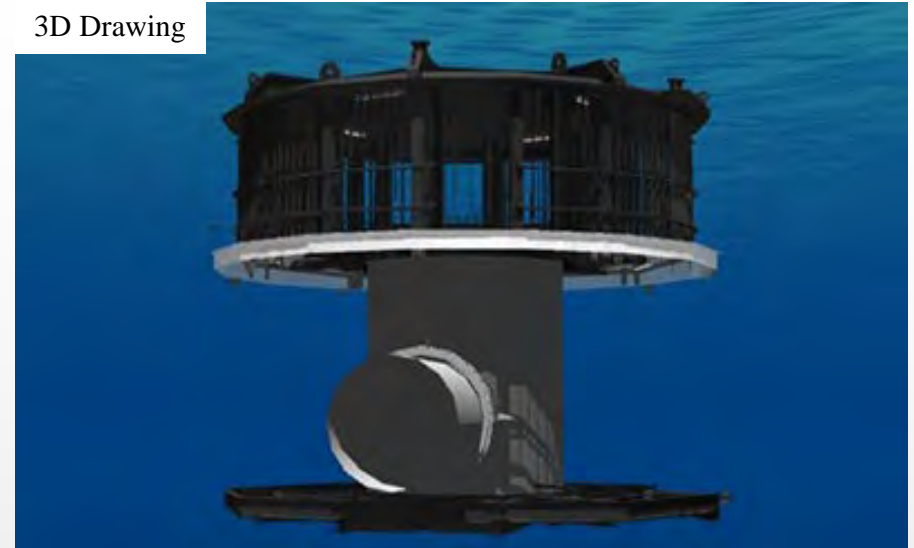


# -Engineering dept.- [Design]

3D Analysis Model of Steel Structure

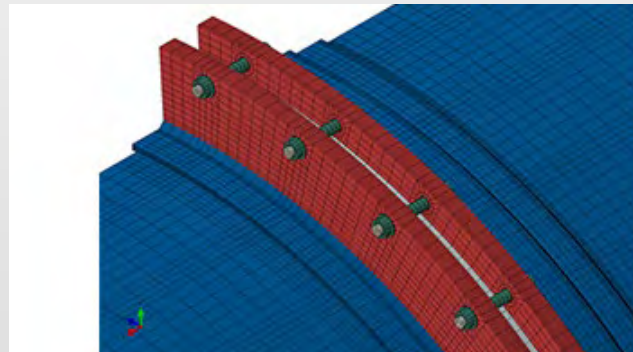
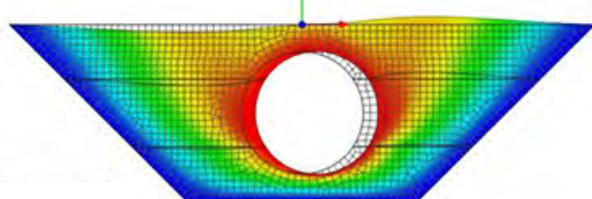


3D Drawing

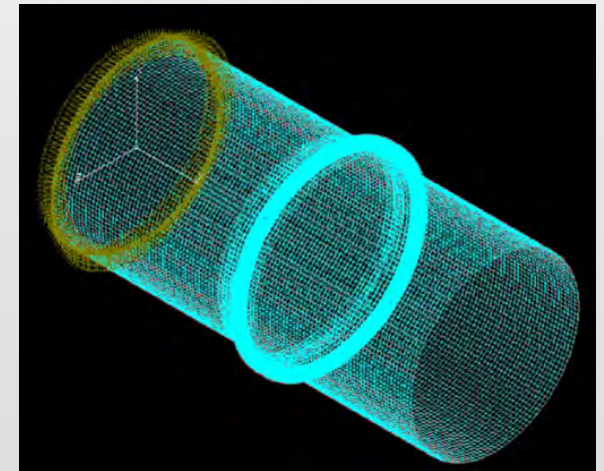


FEM Model

Displacement diagram



Analysis Model of Flange Joint



Analysis by response-displacement method

# -Engineering dept.- [Procurement]

Intake Head



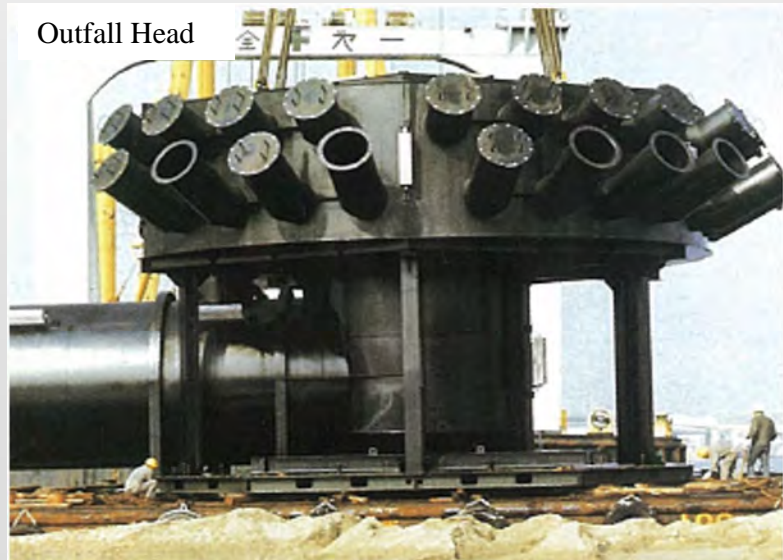
Intake Pipe Protected by Concrete



Intake Pipe



Outfall Head



Flexible Joint



Sea Transportation



Land Transportation



# -Engineering dept.- [Procurement (Control of Fabrication Work) ]

Cutting



Bending



Welding



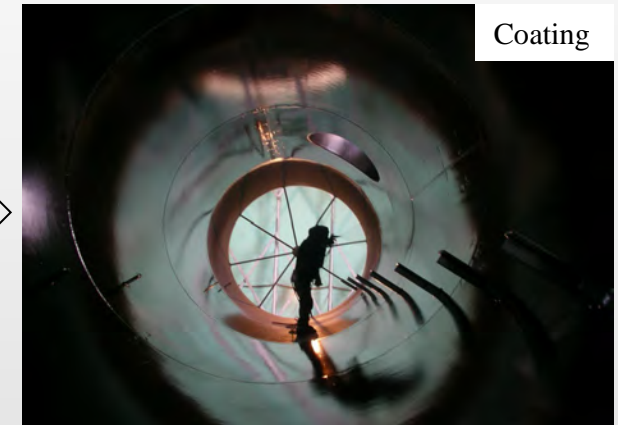
Flange Setting



Blasting



Coating



Intake Head assembly



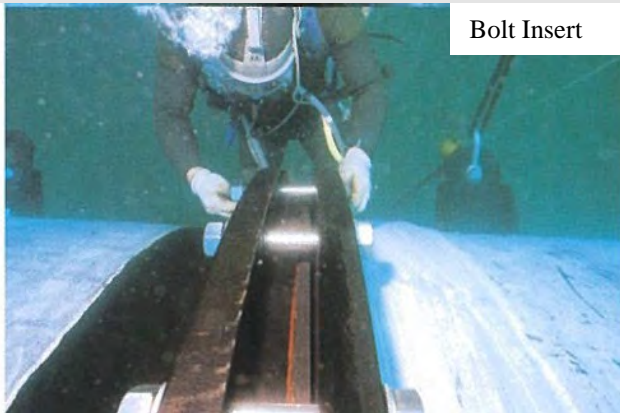
Intake Head



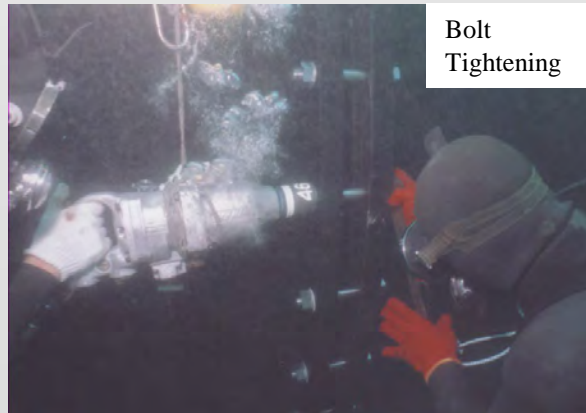
Accessory Setting



-Engineering dept.- [Construction]



Bolt Insert



Bolt  
Tightening



Underwater  
Welding

## -Engineering dept.- [Construction]

Bathymetric Survey



Dredging



Sheet Pile Driving



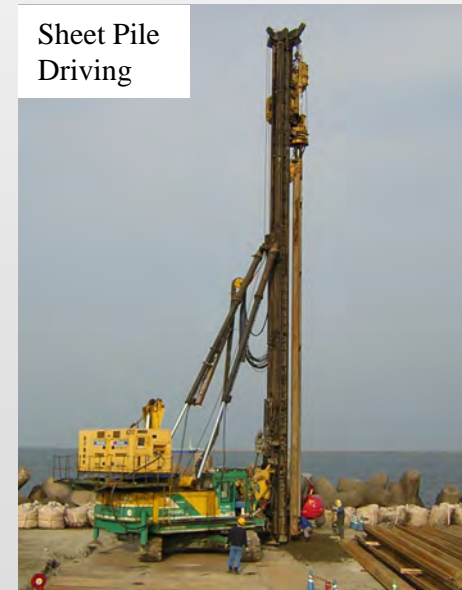
Concrete Casting



Revetment Construction



Sheet Pile Driving



-Engineering dept.- [Diving work] [Diving survey] [Facility maintenance]



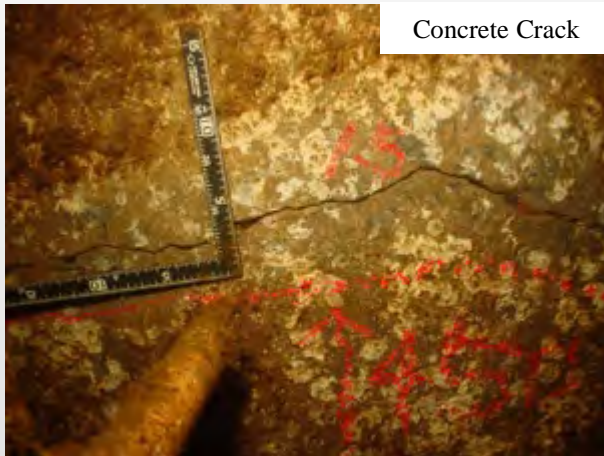
Steel Thickness



Coating Thickness



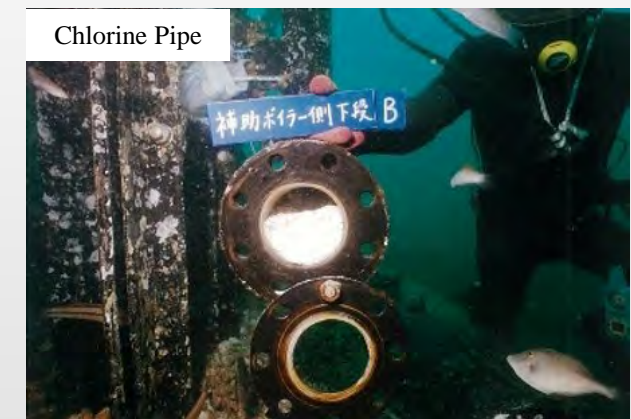
Anode



Concrete Crack



Jellyfish



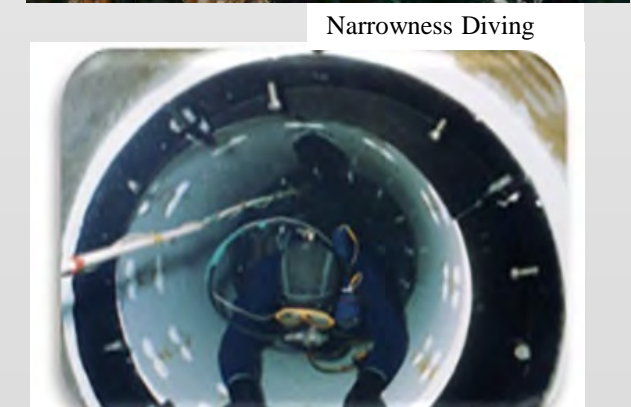
Chlorine Pipe



Steel Surface

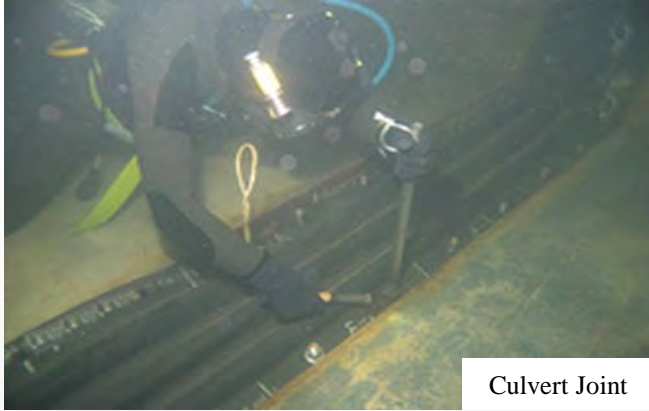


Shellfish



Narrowness Diving

-Engineering dept.- [Diving work] [Diving survey] [Facility maintenance]



Culvert Joint



Epoxy Filling



Scraping Shellfish



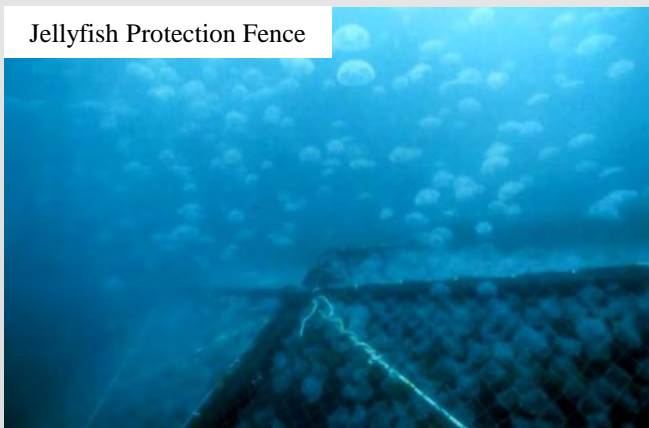
Repair Welding



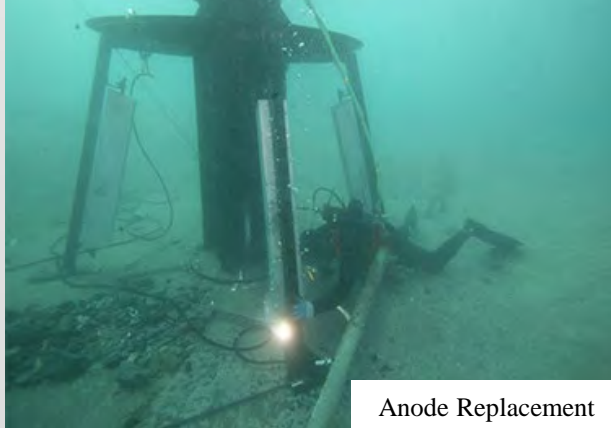
Surface Cleaning



Painting



Jellyfish Protection Fence



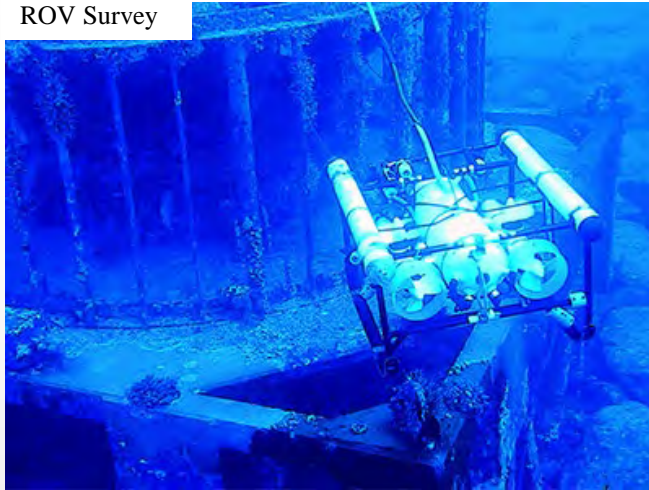
Anode Replacement



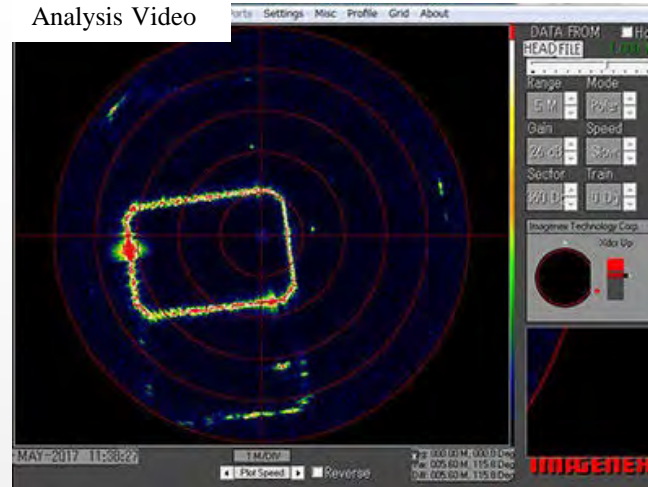
Removal Sediment

# -Engineering dept.- [Diving work] [Diving survey] [Facility maintenance]

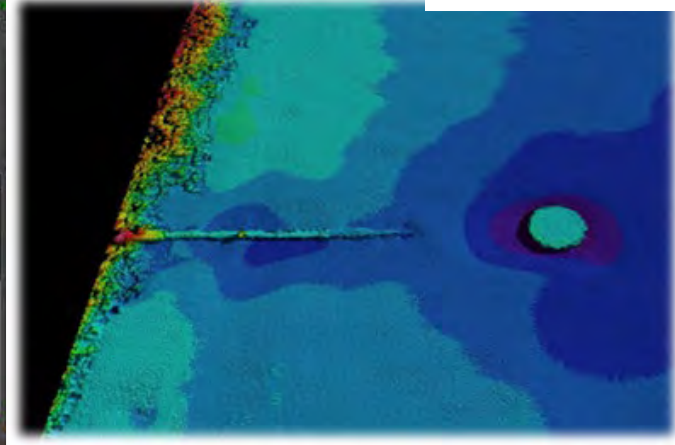
ROV Survey



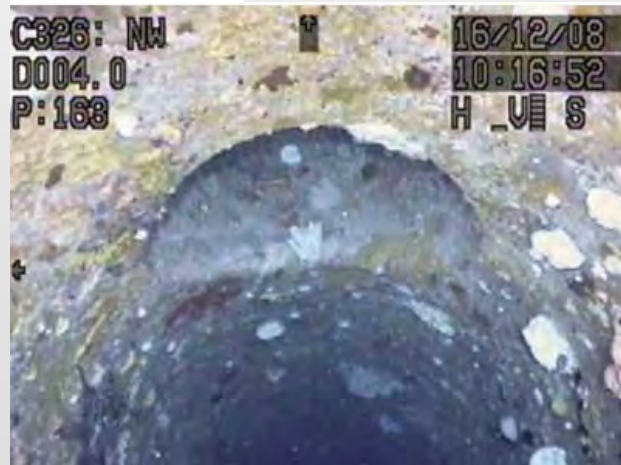
Analysis Video



Multi-beam Sonar



Video Pipe Inside



Biological Survey



Underwater Drone



M2 PRO MAX

Size; 608x294x196mm

Weight; 8.0kg

Max. Depth; 200m

# 2. Experience



## OVERSEAS PROJECT RECORD (Procurement / Construction)-1/2

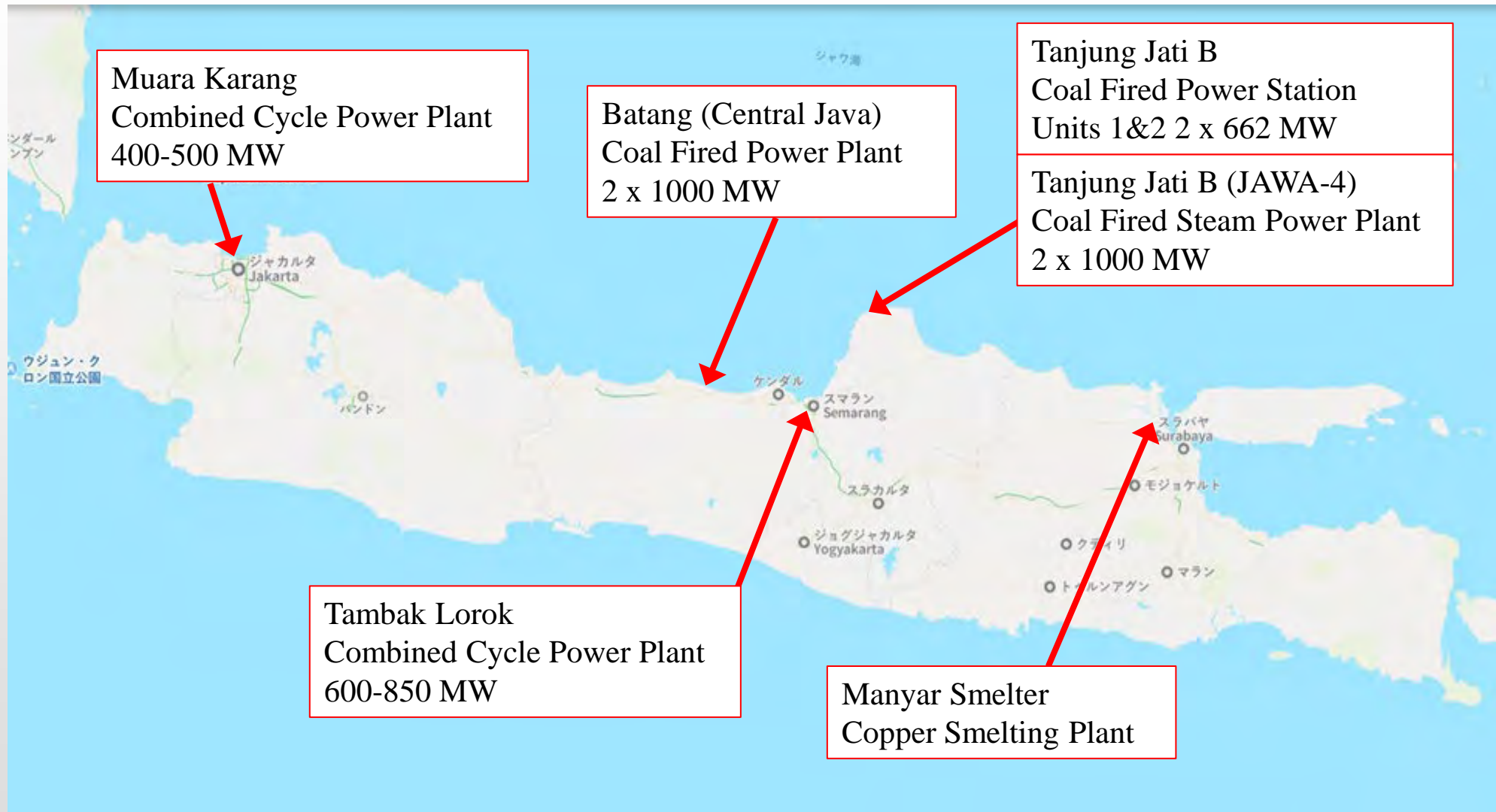
No	Clients	Description of work	Site	Date
1	Taiwan Salt Works	Seawater Intake facilities	Tongsiao, TAIWAN	Jan - '73
2	Petroperu	Seawater Intake facilities	Talara, PERU	Sep - '73
3	IJPC/Toa Corporation	Seawater Intake facilities	Bandashapool, IRAN	Dec - '76
4	Mitsubishi Heavy Industries, Ltd.	Seawater Discharge facilities	Dubai, UAE	Mar - '77
5	Taiwan Power Company	Tongsiao Power Plant / Seawater Intake facilities	Tongsiao, TAIWAN	Dec - '79
6	Japan Industrial Land Development Co., Ltd.	Seawater Intake facilities ( Phase1 extension )	Misurata, LIBYA	Dec - '81
7	Kobe Steel, Ltd.	Seawater Intake facilities	BAHRAIN	May - '83
8	Sasakura Engineering Co., Ltd.	Supply of Seawater Discharge facilities for RO system	BAHRAIN	Feb - '84
9	Kajima Corporation	Supply of Seawater Intake equipment for Neritic Aquafirming Center	CHILE	Mar - '85
10	Kubota Construction Corporation	Construction of Aquaculture Research Center	SOUTH YEMEN	Apr - '87
11	Taiwan Power Company	Tongsiao Power Plant / Rehabilitation of Seawater Intake facilities	Tongsiao, TAIWAN	May - '87
12	Taiwan Power Company	Tongsiao Power Plant / Removal of Seawater Intake Pipe	Tongsiao, TAIWAN	Jul - '88
13	Taiwan Power Company	Tongsiao Power Plant (No4&5) / Seawater Intake & Discharge facilities	Tongsiao, TAIWAN	Nov - '89
14	Kawasaki Heavy Industries, Ltd.	Limay Combined Cycle Power Plant (Block-A) / Seawater Intake & Discharge facilities	Limay, PHILIPPINES	Nov - '92
15	Kawasaki Heavy Industries, Ltd.	Limay Combined Cycle Power Plant (Block-B) / Seawater Intake & Discharge facilities	Limay, PHILIPPINES	May - '93
16	Chiyoda Corporation	PT AMOCO MITSUI PTA INDONESIA / Seawater Intake facilities	Merak, INDONESIA	Dec - '96
17	Mitsui Engineering & Shipbuilding Co., Ltd.	Tanjung Jati "B" Coal-fired Power Plant / Seawater Intake facilities (1st term)	Jepara, INDONESIA	Oct - '99
18	Eimin・Kajima・Daihou JV	Ryumon Atomic Power Plant / Fabrication of Seawater Discharge Head (Supervising)	Ryumon, TAIWAN	Sep - '03
19	Kawasaki Heavy Industries, Ltd.	Mindanao Coal-fired Power Plant / Seawater Intake & Discharge facilities	Mindanao, PHILIPPINES	Jun - '04
20	Takenaka Civil Engineering & Construction Co., Ltd.	Tarahan Coal-fired Power Plant / Seawater Intake facilities	Tarahan, INDONESIA	Jun - '04
21	Mitsubishi Heavy Industries, Ltd.	Tuxpan V Power Plant / Seawater Intake facilities	Tuxpan, MEXICO	Sep - '04



# OVERSEAS PROJECT RECORD (Procurement / Construction)-2/2

No	Clients	Description of work	Site	Date
22	Mitsubishi Heavy Industries, Ltd.	Tuxpan V Power Plant / Seawater Discharge facilities	Tuxpan, MEXICO	Sep - '04
23	Mitsui Engineering & Shipbuilding Co., Ltd.	Tanjung Jati "B" Coal-fired Power Plant / Seawater Intake facilities (2nd term)	Jepara, INDONESIA	Dec - '04
24	Toa Corporation	O-Mon Thermal Power Plant / Seawater Intake facilities	O-mon, VIETNAM	Dec - '07
25	Technip consortium	Dung Quat Refinery / Seawater Intake facilities	Dung Quat, VIETNAM	Mar - '08
26	Technip consortium	Dung Quat Refinery / Seawater Discharge facilities	Dung Quat, VIETNAM	Mar - '08
27	Mexico Carbon Manufacturing S.A. de C.V.	MEXICO ALTAMIRA CARBON BLACK / Seawater Intake facilities	Altamira, MEXICO	Mar - '08
28	Mexico Carbon Manufacturing S.A. de C.V.	Mexico Altamira Carbon Black / Seawater Discharge facilities	Altamira, MEXICO	Mar - '08
29	Mexico Carbon Manufacturing S.A. de C.V.	Mexico Altamira Carbon Black / Circulation pipeline	Altamira, MEXICO	Mar - '08
30	Mexico Carbon Manufacturing S.A. de C.V.	Mexico Altamira Carbon Black / Discharge pipeline	Altamira, MEXICO	Mar - '08
31	Mitsui Engineering & Shipbuilding Co., Ltd.	Tanjung Jati "B-Ex" Coal-fired Power Plant / Seawater Intake facilities	Jepara, INDONESIA	Sep - '10
32	Toshiba Plant Systems and Services Corporation	CEL II-1 × 135MW Sihanoukville Coal-fired power plant/ Intake head	Sihanoukville, CAMBODIA	Jul - '18
33	Mitsui E&S Engineering Co., Ltd.	Central Java Coal-fired Power Plant/ Seawater Intake and Outfall head	Batang, INDONESIA	Jul - '18
34	Mitsui E&S Engineering Co., Ltd.	Tanjung Jati "B-Ex" Coal-fired power plant (5&6)/ Seawater Intake head	Jepara, INDONESIA	Aug - '18
35	Mitsui E&S Engineering Co., Ltd.	Tanjung Jati "B-Ex" Coal-fired power plant (5&6)/ Seawater Circulation Pipe	Jepara, INDONESIA	Apr - '19
36	Mitsubishi Power Corporation	Muara Karang Extension Combined Cycle power Plant/ Seawater Intake head	Jakarta, INDONESIA	Jan - '20
37	Mitsui E&S Engineering Co., Ltd.	Tanjung Jati "B-Ex" Coal-fired power plant (5&6)/ Temporary seawater Intake head	Jepara, INDONESIA	Jan - '21
38	Marubeni Corporation	Tambak Lorok Combined Cycle power Plant Block 3/ Seawater Intake head	Semarang, INDONESIA	Jun - '22
39	CCT Constructors Corporation	Pagbilao unit 3 Coal-fired power plant/ Fabrication of Replaced Intake head	Pagbilao, PHILIPPINES	Jan - '23
40	PT. Chiyoda International Indonesia	Manyar Smelter/ Fabrication of Brine discharge spool with diffuser	Gresik, INDONESIA	Sep - '23
41	PT. Guna Teguh Abadi	Manyar Smelter/ Installation of Brine diffuser pipe and removal of blind flange and wrapping	Gresik, INDONESIA	Feb - '24
42	PT. TJB Power Survices/PT. SWI Jetty Nusantara	Tanjung Jati "B" Coal-fired power plant (U2)/ Replacing pipe	Jepara, INDONESIA	Dec - '24

### 3. Recent Project in Indonesia



## □ Batang (Central Java) Coal Fired Power Plant 2 x 1000 MW



## □ Tanjung Jati B Coal Fired Steam Power Plant 2 x 1000 MW



## □ Muara Karang Combined Cycle Power Plant 400–500 MW

Fab. & Transportation Intake Head



Installation Intake Head: 65 ton



## □ Tambak Lorok Combined Cycle Power Plant 600–850 MW

Pile Driving



Installation of Bar Screen for Intake Head



## □Manyar Smelter Copper Smelting Plant



## □Tanjung Jati B Coal Fired Power Station Units 1&2 2 x 662 MW



# Terima Kasih!

